

CRYSTAL PALACE



1974-75

League Division 3 Saturday 7th September
CRYSTAL PALACE v SWINDON TOWN

Official Programme • 10p

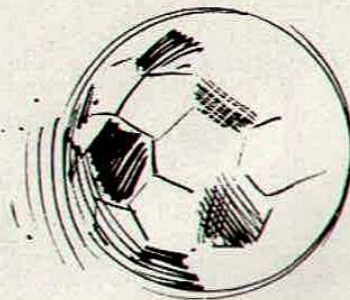
Make your goal a good job with **Philips Croydon**



Watch your local papers
for current job opportunities.
TV, technical, assembly,
testing and administrative/
clerical posts.

Or contact:

**Personnel Department,
Philips Croydon,
Commerce Way,
Purley Way,
Croydon CR9 4JA.
Telephone: 01-688 7766**



PHILIPS

MALCOLM ALLISON

As we strive for promotion this season I think the most important thing is going to be for the players to be able to raise their game away from home. They didn't at Halifax last Saturday and we lost and gave a very disappointing display into the bargain.

Whilst I can understand their problems when confronted with the prospect of playing at some of the smaller Third Division grounds and in front of extremely thin crowds I cannot condone them being unprepared, mentally, to meet the challenge. For a challenge it most definitely is. Those of you who saw us against Brighton and Watford would not have believed it was the same side at Halifax — that is how sub-standard our display was. I know we have a fair percentage of young players in the team but they are still experienced and we should not have got beaten by Halifax.

I do not think we shall have any problems at home for you give the side wonderful support and create an atmosphere that lifts the players. But it is away from home that things are won or lost and at present this is where our problems lie.

Motivation. I suppose that word has become one of the most frequently used by managers and coaches in the last few years and one of the least understood by the general public. But those of us inside the game know only too well how important motivation is.

Motivation is really quite simple. Let me explain it this way: how much motivating do players need, do you think, when they are playing in a Cup Final at Wembley? Of course, the answer is none. But do players look forward with the same eager expectancy to a League fixture at, for instance, Halifax or Chesterfield? Of course not.

But when one is after promotion coping with the mundane is every bit



as important as rising to the big occasion. In fact, it is more important because in every football season there are precious few "champagne" occasions while the bread and butter matches come week in and week out. This is why our side, as individuals, have to be far more professional. They have to prepare themselves mentally just as thoroughly for a visit to one of the "mini" clubs as they would if the next match was at Anfield or Maine Road.

Rest assured that I have been on to the players about their attitude and I shall continue to do so. But essentially it is an individual problem and it is up to the player himself to em-

ploy his professionalism to break down this sub-conscious barrier. I have told them all along — and I will continue to stress to them — that we are the side that every club in the Third Division want to beat. The reasons for this are obvious. We are a big club. We are an ambitious club and we have come from the First Division.

Our opponents need no motivation. We supply it for them. We are a challenge to them. They take a look at our team line up and see the class players we have in our team and immediately they respond to the challenge. They lift their game as a natural consequence.

We are not the first club to have found ourselves in this predicament — nor will we be the last. Aston Villa experienced the same difficulties but eventually mastered them to gain promotion. Only last season, remember, Huddersfield were the prime targets for the other teams in the Third Division.

They, like ourselves, had come through the First and Second Divisions and they suffered the same problems as we are experiencing at the moment. It is a deep problem but it is one our players will have to overcome.

They will have to show the same strength of character that Manchester United are showing at present. Don't tell me there isn't one single side in the Second Division that isn't gunning for United. And don't tell me that Tommy Docherty and his players know it.

But what have they done? They have kicked off with four straight wins. Their players have stared the problem straight in the face. They have said to themselves: "We know we are better than they are but they will only know it when we have beaten them".

That's professional, positive thinking And its the way we have to think.

palace profile

LISTEN to Malcolm Allison on Wyn Davies and Wyn Davies on Malcolm Allison, and you could be excused for believing they were blood brothers.

In a way they are. They developed a healthy respect for each other when Wyn was striking out for Manchester City and Malcolm was team manager at Maine Road.

The respect is mutual, and has stuck ever since. That's one good reason why Malcolm sent for Wyn when it was obvious that, for all their ability and promise, the Palace attack lacked height and perhaps a bit of devil where it counts — in the box.

So Wyn was summoned from Blackpool where he had hardly had a kick for a month, to start a loan transfer period at Selhurst, step straight into the first team against Tranmere, pick up a win bonus and a cut head for his trouble. But as Malcolm said after the Big Fellow's Palace debut: "Wyn is one of the bravest players I know. There was no question that he wouldn't go back on after he cut his head".

Over to Wyn: "When I was at Manchester City, I used to be the target man to knock balls down for players like Francis Lee. I've got a bit of experience playing up front, I'm used to the challenges of defenders, and I fancy Malcolm saw me as the kind of player who could do a similar job for Palace.

"I didn't take a lot of persuading. The Third is the only division I hadn't previously played in, so it's an interesting challenge.

"More than that I regard it as a great favour by Mal to let me come down and play League football to get fit. At Blackpool, we had a lot of youngsters, and it's natural to give them their chance. But I also believe a team must have experience as well.

"I'm only too pleased to do Malcolm a favour. You could say I owe him one. He's a great bloke, and as a coach he is very much a player's man. He was with us every day at Manchester City and I can't speak too highly of what he achieved there.

"Malcolm has known success. The City record speaks for itself. He's had a few setbacks at Palace, but they'll come back up again. The good teams, and the good clubs, always do". The loan transfer system is one that Wyn sees as a good thing for players like himself, and for clubs like Palace who can do each other a favour.

Wyn is a much-travelled star, and his "Wyn the Leap" tag has followed him around since he joined Wrexham, moved to Bolton on to Newcastle, Manchester City, Manchester United and to Blackpool.

The 32-year-old can look back on 150 League goals, and at one time the Wales forward line would have looked bare without Wyn and his namesake Ron, then with Southampton. All good things come to an end, and while Wyn was stepping down to Blackpool, Ron was moving along the South Coast to join Second Division Portsmouth.

But not before Wyn had chalked up 33 games for Wales in a career in top-class football that has spanned around 450 games.

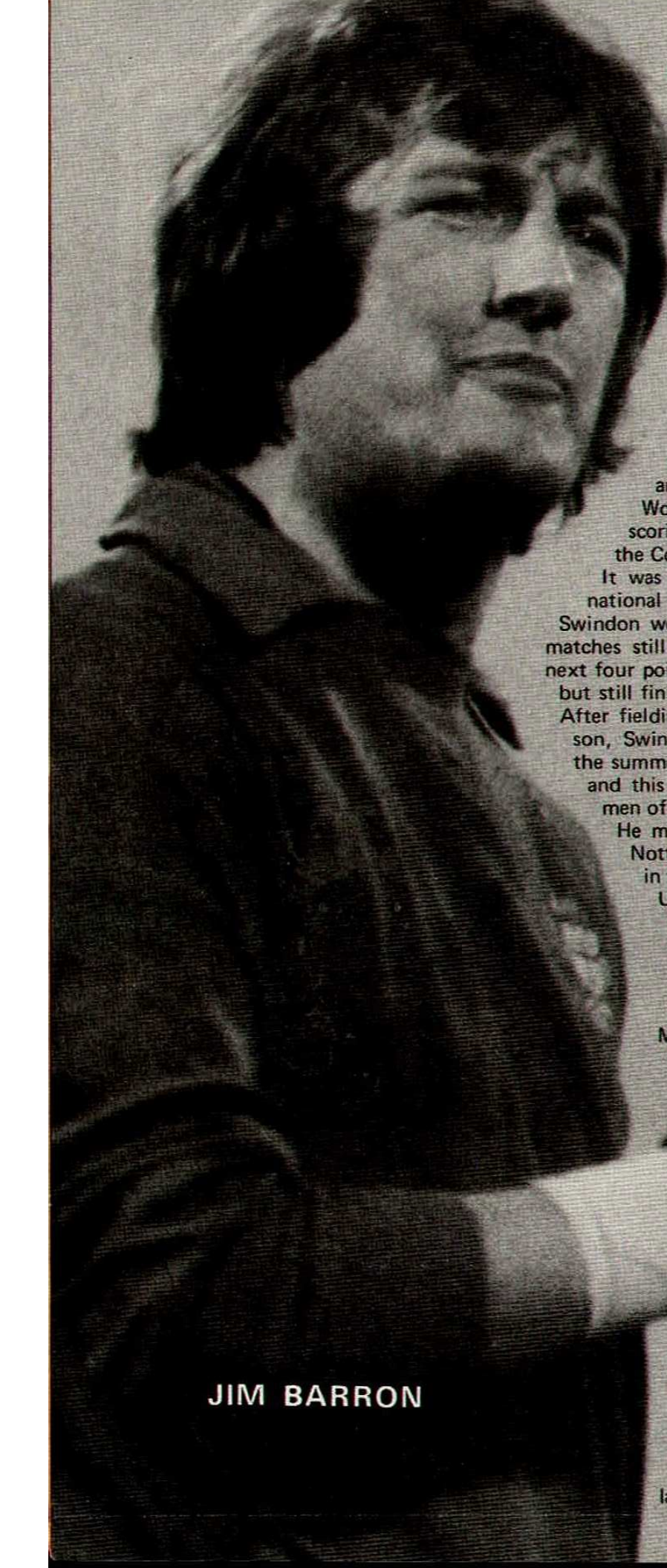
Now Wyn says: "I'm not making any promises while I'm here. Except that I'll do my best for Palace and for Mal.

As the Wyn Davies loan period ticks on, it does not need a mind reader to work out what player and manager are thinking.

But for the time being, it must remain...Wyn Davies, on loan from Blackpool, fighting for an old buddie's cause.

WYN DAVIES





Danny Williams can safely be described as the man Swindon Town turn to in the midst of a crisis. When they were last relegated in 1965, Mr. Williams was called into the manager's chair — and four years later he left the club in its best-ever position as League Cup holders and Third Division promotion winners.

He had a spell as manager of Sheffield Wednesday and was in charge of Fourth Division Mansfield Town when the Swindon Directors asked him to return in March this year. The Wiltshire club were already bottom of the Second Division and there was virtually no hope of saving them from relegation.

Mr. Williams accepted that he would have to build a new future for Swindon. Within a few days of taking over, he paid a club record fee of around £80,000 for Peter Eastoe, the young Wolves striker who impressed everyone with his scoring form in a previous three-month loan spell at the County Ground.

It was too late for the former England Youth international to have any effect in avoiding the drop and Swindon were officially banished to Division III with four matches still remaining. Ironically, they promptly won the next four points on offer by beating Blackpool and Hull City, but still finished six points behind the field in bottom place. After fielding more players than most clubs during the season, Swindon, not surprisingly, trimmed the staff during the summer. A dozen professionals were given free transfers and this allowed Mr. Williams the room to sign two new men of immediate first-team quality.

He made a good choice in paying around £10,000 for Nottingham Forest goalkeeper Jim Barron, who was in the £30,000 bracket on being signed from Oxford United four years ago. After failing to establish a regular place in the First Division with Wolves and Chelsea, Barron developed into a top-class 'keeper during eight years on the Second Division circuit with Oxford and Forest.

Swindon's second summer signing was Hugh McLean for a small fee from West Bromwich Albion. The young Scot looks a very useful mid-field player, though he is short on League experience after only a handful of games with his first club.

As a result of the many changes made during the management terms of Dave Mackay and Les Allen, Mr. Williams now has few survivors from the team which he led to

Wembley glory against Arsenal five years ago. Of the team which started this term by losing 2-0 at home to Bury, only John Trollope had appeared in the League Cup Final win. This long-serving professional has spent 12 years in the senior side and broke the club's appearance record last season.

JIM BARRON

SWINDON TOWN

Other links with the Wembley side were broken in the last year by the big-money sale of Rod Thomas to Derby County and the modest sum received from Bradford City for goalkeeper Peter Downsborough. And, of course, Don Rogers should be appearing today for Palace against his old club.

The cash pulled in from the sale of Rogers was partly used to sign Southampton winger Tom Jenkins as a replacement, while former boss Les Allen made two five-figure signings during last season. John McLaughlin, an England Youth international full back, came from Colchester United and David Munks, an experienced tradesman with First Division service at Sheffield United, was pulled in from Portsmouth. Swindon's first-team pool also includes two "bargain" captures in Ron Potter, a centre half who transferred from West Bromwich Albion in November, 1970, and Will Dixon, a utility player snapped

up from Reading's free transfer list.

Compared with the days when Swindon were noted for producing their own young stars, the current side is short of home-produced players. But there is considerable potential among a talented trio made up by midfield man Terry Hubbard, flank striker David Moss and forward David Syrett.

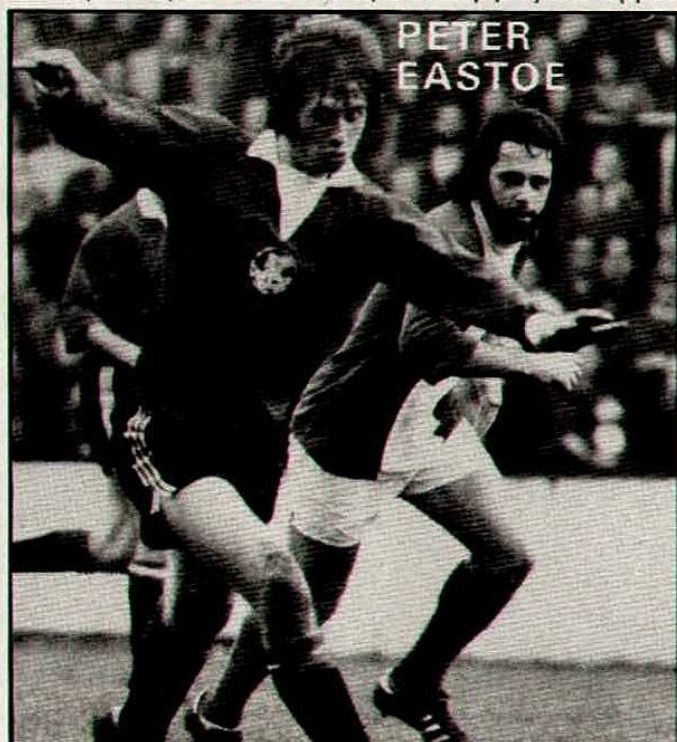
Newport-born Hubbard is probably most advanced, certainly in terms of being a Welsh Under-23 international, while Oxfordshire-born Moss often looked a useful marksman when winning a regular place last season. Syrett, however, is perhaps the most exciting prospect, having made the League side at 17 last year. He did well enough to win selection for the England Youth team.

Injuries affected the balance of the team as they prepared for this season and they particularly missed Joe Butler, the former Newcastle midfield player who appeared in Town's last promotion side and shared in their Anglo-Italian triumphs, Ken Stroud, another midfield operator, was also booked for a cartilage operation.

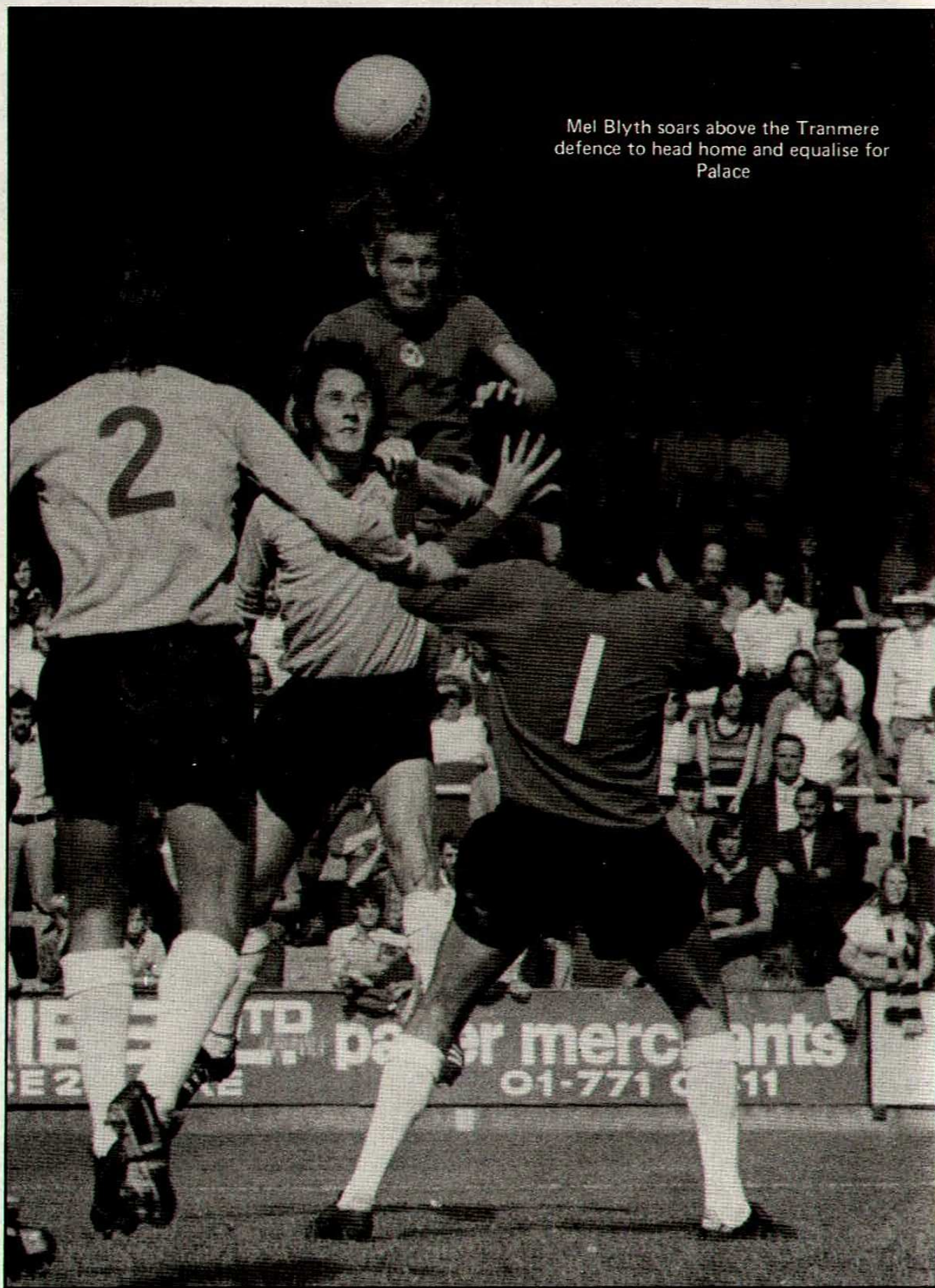
Even so, it was a shattering disappointment for Danny Williams when Swindon lost the first home game against Bury. "We were terrible", he said, and added that Barron's goalkeeping probably saved them from losing by four or five goals. He was more pleased with the form in the League Cup against Portsmouth, but the Second Division side still won 1-0 at the County Ground.

He made no secret of the fact that a couple of signings were in his plans and he showed his ambition when attempting to buy Scottish international George Graham from Manchester United. This fell through despite Mr. Williams' personal trip to Old Trafford, but the size of the fee which would have been involved underlined the backing he is receiving from the Directors.

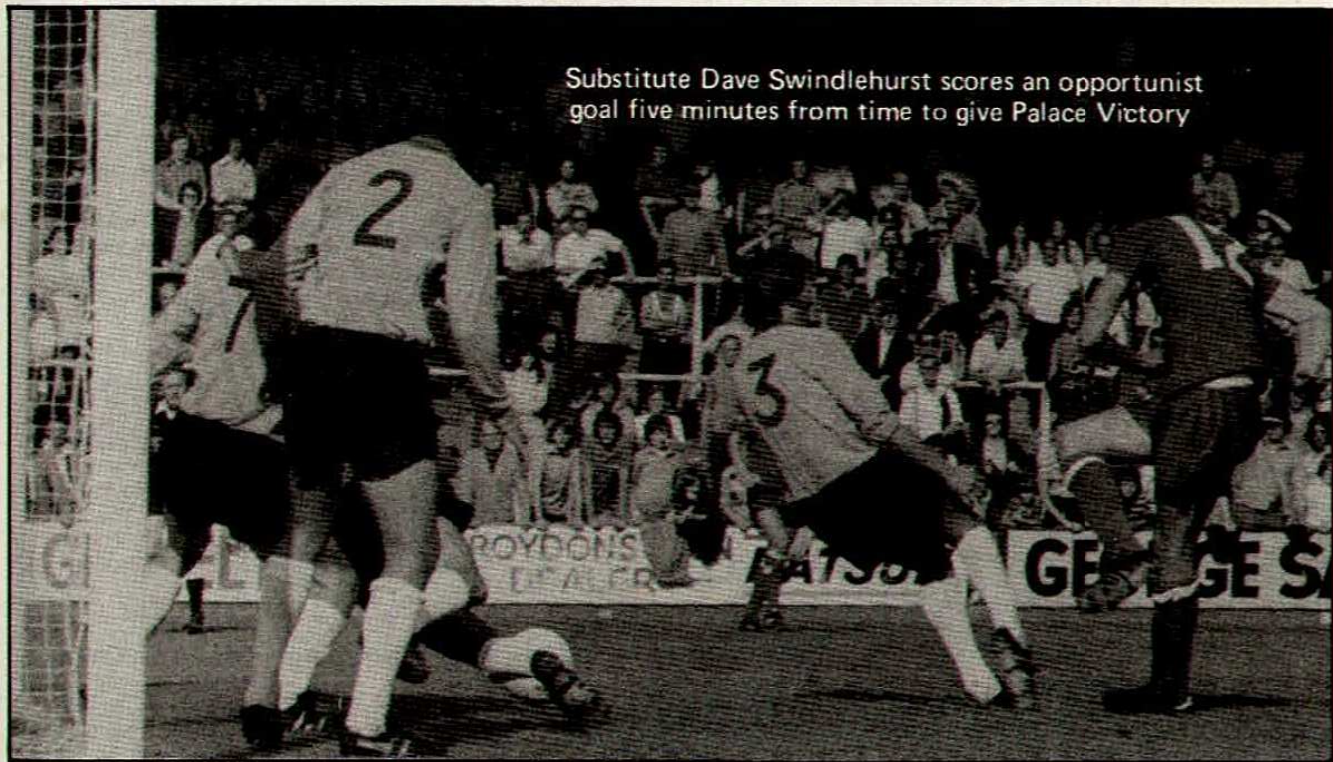
In a general look at the club's potential, Mr. Williams says that things are no worse than when he first joined Swindon in 1965. "What we did then we can do again", he says.



Mel Blyth soars above the Tranmere defence to head home and equalise for Palace



action



Substitute Dave Swindlehurst scores an opportunist goal five minutes from time to give Palace Victory



A near miss for Jeff Johnson after leaving the Tranmere defence stranded shoots narrowly wide

STATISTICS

FOOTBALL LEAGUE DIVISION THREE TABLE
Up to and including 31 August 1974

	P	W	D	L	F	A	W	D	L	F	A	P	Leading Goalscorers
Southend	3	2	0	0	4	2	1	0	0	1	0	6	Downes, Halifax 4
Charlton	3	1	0	0	2	0	1	1	0	3	2	5	McNeil, Hereford 4
Bournemouth	3	1	0	0	2	0	1	0	1	1	1	4	Curtis, Charlton 3
Hereford	3	2	0	0	4	0	0	0	1	0	2	4	Kowalski, Chesterf'd 3
Halifax	3	1	1	0	5	3	0	1	0	1	1	4	Whittle, Palace 3
Peterboro	3	1	0	0	2	0	1	0	1	2	3	4	Lewis, Grimsby 3
Preston	3	2	0	0	4	2	0	0	1	2	3	4	Smallman, Wrexham 3
Blackburn	3	1	0	0	3	2	1	0	1	2	3	4	
Brighton	3	2	0	0	3	1	0	0	1	0	2	4	
Colchester	3	1	1	0	2	1	0	0	1	2	3	3	
Swindon	3	1	0	1	2	2	0	1	0	2	2	3	
Wrexham	3	1	1	0	5	3	0	0	1	1	3	3	
Watford	3	1	0	0	3	2	0	1	1	2	4	3	
Grimsby	3	1	0	1	4	2	0	0	1	1	2	2	
Chesterfield	3	1	0	0	3	1	0	0	2	2	4	2	
Huddersfield	3	1	0	1	4	3	0	0	1	0	1	2	
Tranmere	3	1	0	1	2	1	0	0	1	1	2	2	
Walsall	3	0	1	0	1	1	0	1	1	4	5	2	
Bury	3	0	0	1	0	1	1	0	1	3	3	2	
Plymouth	3	1	0	0	2	1	0	0	2	1	3	2	
C. Palace	3	1	0	0	2	1	0	0	2	1	4	2	
Port Vale	3	0	1	0	2	2	0	1	1	2	5	2	
Aldershot	3	1	0	0	1	0	0	0	2	0	4	2	
Gillingham	3	0	1	1	2	3	0	0	1	0	2	1	

APPEARANCES AND GOALSCORERS INC. CUP MATCHES

FIRST TEAM	A	G	FOOTBALL COMB.	A	G
Barry	3		Ayres	3	1
Blyth	5	1	Beason	4	
Chatterton	2	1	Burns	4	
Davies	2		Cannon	3	1
Hammond	5		Chatterton	2	1
Jeffries	5		Coker	1	
Johnson	5		Davis	4	
Jump	5		Hill	4	
Lindsay	5		Hinshelwood M.	4	
Mulligan	2		Hinshelwood P.	3	1
Rogers	3		Mulligan	1	
Swindlehurst	2	1	Page	3	
Taylor	5	1	Rogers	2	1
Whittle	3	3	Sweeny	3	2
			Williams	3	

LEAGUE DIVISION 3 STATISTICS

HIGHEST ATTENDANCE

26,235 Brighton v Palace
August 17, 1974.

BIGGEST HOME WIN

Grimsby 3 Port Vale 0
August 31, 1974.

LOWEST ATTENDANCE

2,354 Tranmere v Aldershot
August 31, 1974.

BIGGEST AWAY WIN

Swindon 0 Bury 2
August 17, 1974.

17th August, League Division Three
BRIGHTON 1, PALACE 0

At Goldstone. Attendance: 26,235.
CRYSTAL PALACE — Hammond,
Mulligan, Jump, Johnson, Jeffries,
Blyth, Whittle, Lindsay, Hill, Rogers,
Taylor. Sub: Swindlehurst.

21st August, League Cup Round One
WATFORD 1, PALACE 1

At Vicarage Road. Attendance: 10643
CRYSTAL PALACE — Hammond,
Mulligan, Jump, Johnson, Jeffries,
Blyth, Lindsay, Whittle, Swindlehurst,
Rogers, Taylor. Sub: Cannon.

24th August, League Division Three
PALACE 2, TRANMERE 1

At Selhurst Park. Attendance: 15,928
CRYSTAL PALACE — Hammond,
Barry, Jump, Johnson, Jeffries, Blyth,
Lindsay, Whittle, Davies, Rogers, Tay-
lor, Swindlehurst.
Goalscorers: Blyth (1), Swindlehurst
(1)

27th August, League Cup Round One
Replay
PALACE 5, WATFORD 1

At Selhurst Park. Attendance: 12,801
CRYSTAL PALACE — Hammond,
Barry, Jump, Johnson, Jeffries, Blyth,
Lindsay, Whittle, Swindlehurst, Chat-
terton, Taylor. Sub: Ayres.
Goalscorers: Whittle (2), Chatterton
(1), Taylor (1), Own goal (1).

20th August, Football Combination
Q.P.R. 2, PALACE 1

At Shepherds Bush
CRYSTAL PALACE — Burns, Hin-
shelwood (M), Page, Davis, Coker,
Chatterton, Hill, Sweeny, Williams,
Hinshelwood (P), Beason, Sub: Everett
Goalscorer: Hinshelwood (P).

17th August, S.E. Counties
PALACE 3, MILLWALL 2

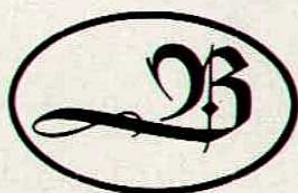
At Langley Park
CRYSTAL PALACE — Ruggiero,
Coker, McCarthy, McQueen, Teather,
Davis, Smillie, Brennan, Everett,
Walsh, Sweeny, Sub: Boyle.
Goalscorers: McCarthy, Brennan,
Sweeny.

FOOTBALL LEAGUE DIV. III

DATE	OPPONENTS	ATT	F A	DATE	OPPONENTS	ATT	F A
Aug 17	BRIGHTON & HOVE A.	26.235	0 1	26	SOUTHEND UNITED		
21	WATFORD (L.C)	10.643	1 1	28	GILLINGHAM		
24	TRANMERE ROVERS	15.298	2 1	Jan 4	HEREFORD UNITED		
27	WATFORD (LC)	12.801	5 1	11	WATFORD		
31	HALIFAX TOWN	3.295	1 3	15	LEAGUE CUP SF		
Sept 7	SWINDON TOWN			18	CHARLTON ATHLETIC		
10	BRISTOL CITY (LC)			22	LEAGUE CUP SF		
13	SOUTHEND UNITED			25	ALDERSHOT (4)		
18	HEREFORD UNITED			Feb 1	BURY		
21	WREXHAM			8	PETERBOROUGH UNITED		
24	PRESTON NORTH END			15	ALDERSHOT (5)		
28	HUDDERSFIELD TOWN			22	PLYMOUTH ARGYLE		
Oct 1	GRIMSBY TOWN			28	HALIFAX TOWN		
6	CHESTERFIELD			Mar 8	PRESTON NORTH END (6)		
9	LEAGUE CUP 3			15	HUDDERSFIELD TOWN		
12	AFC BOURNEMOUTH			18	BRIGHTON & HOVE A.		
19	WALSALL			22	SWINDON TOWN		
22	BLACKBURN ROVERS			25	COLCHESTER UNITED		
26	PORT VALE			28	GILLINGHAM		
Nov 2	PETERBOROUGH UNITED			31	WREXHAM		
6	BLACKBURN ROVERS			Apr 1			
9	BURY			5	PORT VALE (SF)		
13	LEAGUE CUP 4			8	GRIMSBY TOWN		
16	PLYMOUTH ARGYLE			12	CHESTERFIELD		
23	F.A. CUP 1			19	AFC BOURNEMOUTH		
30	CHARLTON ATHLETIC			21	TRANMERE ROVERS		
Dec 4	LEAGUE CUP 5			25	WALSALL		
7	WATFORD			May 3	F.A. CUP FINAL		
14	F.A. CUP 2						
20	COLCHESTER UNITED						

FOOTBALL COMBINATION

Aug 20	Q.P.R.	1 2	Nov 2	PLYMOUTH A.		Feb 5	SWANSEA CITY	
24	LUTON TOWN	1 4	6	READING		12	BOURNEMOUTH	
28	Q.P.R.	4 2	9	IPSWICH TOWN		19	PLYMOUTH A.	
31	LEICESTER CITY	1 1	12	SWANSEA CITY		26	SWINDON TOWN	
Sept 4	NORWICH CITY		20	NORWICH CITY		Mar 1	LEICESTER CITY	
7	BIRMINGHAM C.		30	WEST HAM U.		5	BOURNEMOUTH	
14	T'HAM HOTSPUR		Dec 4	READING		12	BIRMINGHAM C.	
18	LUTON TOWN		11	SOUTHAMPTON		15	BRISTOL ROVERS	
21	SWINDON TOWN		18	BRISTOL ROVERS		26	CARDIFF CITY	
Oct 2	CARDIFF CITY		30	CHELSEA		Apr 2	CHELSEA	
5	ARSENAL		Jan 11	SOUTHAMPTON		8	FULHAM	
16	FULHAM		15	WEST HAM U.		15	IPSWICH TOWN	
19	OXFORD UNITED		25	T'HAM HOTSPUR		19	BRISTOL CITY	
30	BRISTOL CITY		29	OXFORD UNITED		23	ARSENAL	



PROMOTION in 1974/5

Not only for the Palace, but for products, services, sales, personalities, company images, and so on. Ask the experts!

BURCHMORE ADVERTISING LIMITED

Advertising Marketing Public Relations
27 PARK STREET, CROYDON CRO 1YD. 01-686 9105

We are Croydon's leading advertising agency, with clients from the Severn Estuary to the Black Sea Coast.

CAMPAIGN FOR PALACE

Thank you for the hundreds of completed questionnaires and letters. (I particularly appreciated the 20p postal order from eleven year old Freddie Elderkin of Orpington). Your views and suggestions are being carefully studied by the Campaign Team. I will be replying to you all but there are so many that this will take a little time.

Many of you have asked for better communication between the Supporters and the Club. This makes sense; improvements are being planned and announcements will be made in the near future. We agree that conditions at the Holmesdale End, particularly the toilet facilities, are not good enough for the best supporters in the land. Future development of this part of the ground is already planned. However, temporary improvement is an early priority. Members of the committee, including myself, will watch a forthcoming home match from the Holmesdale terraces and see for ourselves!

Finally I hope you will agree with me that the wonderful cup-tie with Watford makes all our united support and effort for Malcolm and the Team seem worth it!

John Macdonald
Campaign Chairman.

CAMPAIGN FOR PALACE

Fiveran Brickwork Ltd.

52 TRITTON ROAD, LONDON SE21 8DE

Brickwork Contractors
in the
Greater London Area

**Require
Bricklayers and
Hodcarriers**

Tel: 01-670 1419/5747

Dale Martin's Wrestling Spectaculars



Fairfield Croydon

Box Office 01-688-9291

Tuesday 17th September at 8.00 pm



SHANKS of CROYDON

*can now offer you a complete sports
ground service*

mower sales, service, machinery
fertilisers, grass seeds, weedkillers
screened soil, fungicides, sports nets
contact spraying.

Free Delivery within 50 miles Radius

Free advisory service

Write or phone for free price lists.

339 Whitehorse Road, Croydon CR0 2HS
Tel: 01-684 5619

PALACE IN THE PAST

SEASON 1920-21: OUR FIRST (AND ONLY) CHAMPIONSHIP.

Every true Palace supporter should be aware of the fact that Crystal Palace won promotion, at the very first time of asking, in the Football League. The season was 1920-21, and the Palace, newly elected to the Football League with 20 other Southern League clubs, became the first Champions of the Third Division. This was the only occasion when we have won a Championship and all subsequent promotions have been from the position of runners-up, although in 1905-6, the season of the founding of the present Club, we finished top of the second division of the Southern League and were promoted to its first division.

Palace's first season in the Football League began with a most inauspicious defeat in the Welsh Valleys by Merthyr Town, 1-2, on Saturday August 28th 1920.

However Palace played the next six matches without conceding a goal, avenged that Merthyr defeat by 3-0 in the return game in the process and entered October with an 11-2 goal average following a sparkling 4-0 win at Brentford that we have never bettered.

Palace played strongly if not with great inspiration until Christmas when they defeated Brighton in both matches only to be held to a goalless draw by Queens Park Rangers on New Years Day at The Nest. Only Rangers and Swansea took more than two points from us that season and no club completed the double over us.

Palace came into their own with a magnificent run that began on February 9th with a mid-week 2-0 win at home over Grimsby (we've only met Grimsby twice in the League since then in Season 1961-62). That win was the first of 16 matches without defeat that lasted unbroken to the end of the season. Ten wins and six draws drove Palace past all challengers — notably Southampton with whom we played two 1-1 draws over Easter 1921 and who were themselves promoted the following season — and to the certainty of promotion after a 1-1 draw at Watford on April 16th with three matches still to play.

The stars of that fine achievement were four in

number; each an ever present member of the team: Jack Alderson in goal (later to play for England v France in Paris), Jack Little and E. Rhodes who were the full backs and who kept the goals against down to 34 (and we never done better than that even with today's defensive emphasis), and at centre forward J. Conners.

NIGEL SANDS

LEAGUE—DIVISION 3 — 1920-21

	P	W	D	L	F	A	Pts
Crystal Palace	42	24	11	7	70	34	59
Southampton	42	19	16	7	64	28	54
Queens Park Rangers	42	22	9	11	61	32	53
Swindon Town	42	21	40	11	73	49	52
Swansea Town	42	18	15	9	56	45	51
Watford	42	20	8	14	59	44	48
Millwall	42	18	11	13	42	30	47
Merthyr Tydfil	42	15	15	12	60	49	45
Luton Town	42	16	12	14	61	56	44
Bristol Rovers	42	18	7	17	68	57	43
Plymouth Argyle	42	11	21	10	35	34	43
Portsmouth	42	12	15	15	46	48	39
Grimsby Town	42	15	9	18	49	59	39
Northampton Town	42	15	8	19	59	75	38
Newport County	42	14	9	19	43	64	37
Norwich City	42	10	16	16	44	53	36
Southend United	42	14	8	20	44	61	36
Brighton	42	14	8	20	42	61	36
Exeter City	42	10	15	17	39	54	35
Reading	42	12	7	23	42	59	31
Brentford	42	9	12	21	42	67	30
Gillingham	42	8	12	22	34	74	28

PALACE IN THE PAST COMPETITION

The first competition which was appertaining to season 1928/29, was a terrific success with over 150 replies! The first letter opened was one of only three with the correct answer of "Merthyr Town" although the great majority did reply with "Merthyr Tydfil". The winner was Mr. Gordon Dick of Forest Hill who will be a guest of the Vice Presidents Club at today's match.

We hope that all of those fans who were unlucky this time will try again today and the question is: Who was Palace's leading goalscorer for season 1920-21 and how many appearances did he make that season. Send your answers to Tony Shaw Commercial Manager, Crystal Palace F.C. Selhurst Park, South Norwood, London. The first correct entry will be notified and arrangements made to suit.

club scene

GLAZIERS CLUB

TONIGHT IN CABARET

BERNIE SEARL
(COMEDIAN)

FORTHCOMING ATTRACTIONS

Saturday 14th September
JOHN McCORMICK – SOCIAL EVENING

Saturday 21st September
CABARET – TONY LYNHAM
(Vocal/Guitar)

Saturday 28th September
DANCE – THE BILL BARNHAM TRIO

**TODAY
IS THE
FINAL DATE
FOR RENEWING
MEMBERSHIP
TO THE
GLAZIERS CLUB**

SUPPORTERS SOCIAL CLUB

**NEXT MONDAY
9TH SEPTEMBER**

JAZZ!
**WITH THE
RON RUSSELL BAND**

**EVERY TUESDAY
SOCIAL EVENING
7.30 – 10.30
DARTS TABLE TENNIS COLOUR T.V.
LICENSED BAR**

**THURSDAY 26TH SEPTEMBER
DANCE & CABARET**

CRYSTAL PALACE F.C.

REQUIRES STAFF

CASHIER/TYPIST

FULL OR PART TIME

Must be over 19 years, used to banking cash, typing letters and general office routine.

RETIRED MALE CLERK

PART TIME

For stocktaking dealing with customers and handling cash.

WEEKEND BAR STEWARD

FOR GLAZIERS CLUB.

**Apply to Tony Shaw, Commercial
Manager. Telephone: 771 9502
except on Match Days.**

GROUND ADVERTISING

A number of advertising sites on the ground perimeter are now available for hire on an annual contract basis. For further information apply to: Tony Shaw, Commercial Manager, or ring our agents direct on 01 304 4618.

SUPPORTERS SOCIAL CLUB TRAVEL SECTION

We are running coaches to Southend United on Friday 13th September and Hereford United on Wednesday 18th September. Bookings are being accepted in the Social Hall before and after today's match or next Tuesday evening, and the prices are:-

Southend 95p Adults Juniors & OAP's

Hereford £1.70 Adults £1.55 Juniors & OAP's.

NEXT HOME MATCH

**FOOTBALL LEAGUE CUP ROUND 2
PALACE v BRISTOL CITY
TUESDAY 10 SEPTEMBER KO 7.30pm**

club shop

THE CLUB SHOP IS OPEN EVERYDAY MONDAY TO SATURDAY

PALACE SOUVENIRS

Stocks are available in the official souvenir shop situated along the front of the Social Club.

Hours of opening are:

9.30 a.m. — 5.30 p.m. Monday to Saturday

Souvenirs can also be obtained on Match days only in the shops situated on the Whitehorse Lane Terrace and the New Stand. Most items can be obtained by mail order service. Please send S.A.E. for list of souvenirs.

STAR ITEMS NOW ON SALE!

SPLASH BADGE	35p
RING (S/S)	40p
LADIES PENDANT	50p
TEAM STRIP (ALL SIZES) from	£3.00
BLAZER BADGES (WIRE WOVEN)	£3.50
CAR STICKERS	12p
GLASS TANKARD	75p
LAPEL BADGE	20p & 25p
ROSETTE	15p & 35p
CLUB TIE	£1.50
SATIN SCARF (CHOICE OF TWO)	65p
BARR SCARF	£1.20
BOB HAT	75p
AUTOGRAPH BOOK	50p
PROGRAMME BINDER	60p
CUFF LINKS (DIAMOND CUT)	£3.75

PROGRAMME COLLECTORS!

Programmes from Palace away games are always on sale at our official programme shop situated along the front of the old stand (Holmesdale Road End).

PALACE HANDBOOK

The official Club Handbook for this season is now on sale in the Souvenir Shops, Glaziers Club, Vice Presidents Club and Social Club price 20p. Pen Pictures and Photos of all Palace players are included together with all the usual annual statistics.

Purchase your copy now.



TEAM SHEET

CRYSTAL PALACE

Scarlet and Royal Blue Striped Shirts
Royal Blue Shorts

Paul HAMMOND	1
Roy BARRY	2
Stewart JUMP	3
Jeff JOHNSON	4
Derek JEFFRIES	5
Mel BLYTH	6
Mark LINDSAY	7
Alan WHITTLE	8
Wyn DAVIES	9
Nick CHATTERTON	10
Peter TAYLOR	11
Dave SWINDLEHURST	12

SWINDON TOWN

White Shirts
Black Shorts

Jim BARRON	1
John McLAUGHLIN	2
John TROLLOPE	3
Terry HUBBARD	4
Ron POTTER	5
Joe BUTLER	6
David MOSS	7
Will DIXON	8
Peter EASTOE	9
Hugh McLEAN	10
Tom JENKINS	11

SCORE SHEET

1	ARSENAL		8	WEST HAM UNITED		15	AFC BOURNEMOUTH	
2	BURNLEY		9	SHEFFIELD UNITED		16	SOUTHEND UNITED	
3	CARLISLE UNITED		10	WOLVES		17	CHARLTON ATHLETIC	
4	STOKE CITY		11	LEICESTER CITY		18	HUDDERSFIELD TOWN	
5	IPSWICH TOWN		12	ASTON VILLA		19	PETERBOROUGH	
6	EVERTON		13	ORIENT		20	WREXHAM	
7	LEEDS UNITED		14	BLACKPOOL		21	PLYMOUTH ARGYLE	
	LUTON TOWN			MILLWALL			TRANMERE ROVERS	
	LIVERPOOL			FULHAM			PORT VALE	
	TOTTENHAM			YORK CITY			GILLINGHAM	
	MIDDLESBROUGH			ALDERSHOT			WALSALL	
	CHELSEA			PRESTON NORTH END			HEREFORD UNITED	
	Q.P.R.			BLACKBURN ROVERS			WATFORD	
	BIRMINGHAM CITY			BRIGHTON			HALIFAX TOWN	

REFEREE: D. TURNER (Cannock) LINESMEN: W.G. CLEERE (H.Wycombe) Red J.W. CRAIGIE (Chatham) Orange

CRYSTAL PALACE FOOTBALL CLUB LIMITED

President A.J. Wait

Directors: R.E. Bloye (Chairman) R.S. Briggs K.B. Sinclair E.J. Swann R.R. Varey
Manager: Malcolm Allison Secretary: Alan Leather Commercial Manager: Tony Shaw
Coach: Frank Lord Honorary Medical Officers: Dr. J.P. Reid M.B. Ch. B. (Glas.) Dr. E.A.M. Tuck
Physiotherapist: C. Simpson M.S.P. Crystal Palace Football Programme Editor: Tony Shaw
Produced and designed by Midland Sports Magazines
Printed by Ward & Woolverton Limited All Contents Copyright